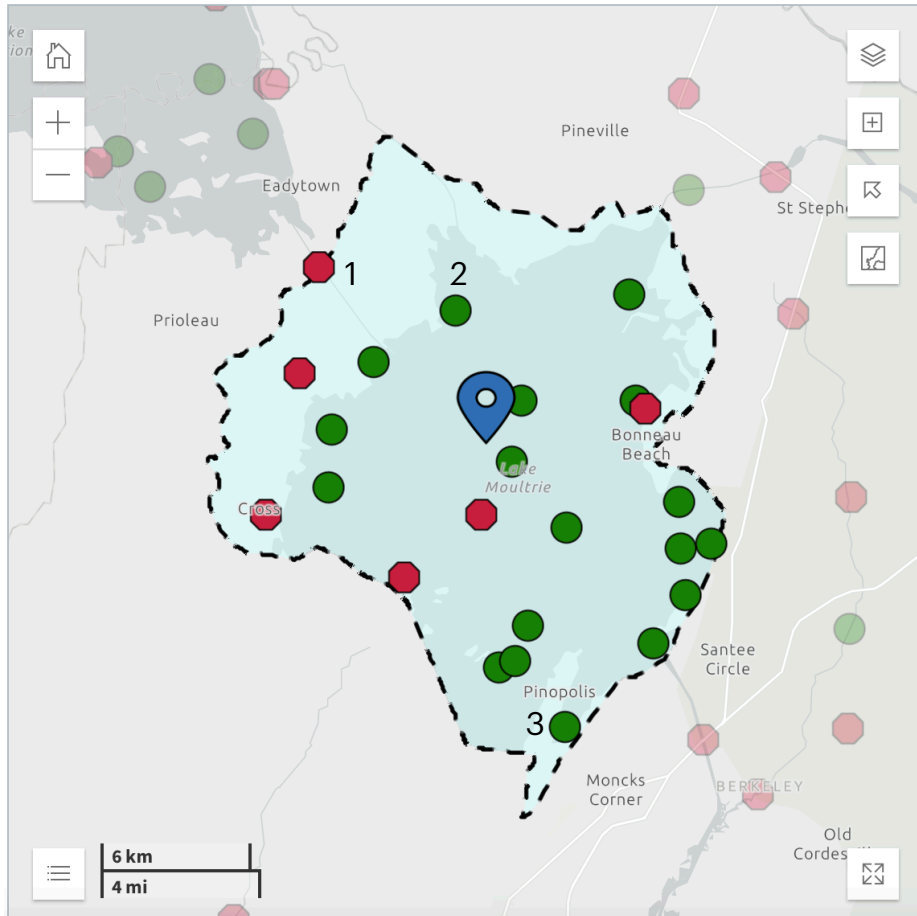


Example
Berkeley County, South Carolina
WATERSHED: Lake Moultrie (030502010101)



How many? Waterbodies	How many? Monitors and Sensors	How many? Permitted Dischargers
--------------------------	--------------------------------------	---------------------------------------

Using the website mywaterway.epa.gov/community/, identify the following waterways and explain if they are safe or not and why.

Number 1
 State Waterbody ID: _____

 Year Last Reported: _____
 Waterbody Condition: _____

Evaluated Use	Condition

Impairment Defined: _____

[View Waterbody Report](#)

Existing plans for restoration _____
 303d Listed: _____
 Type of water: _____
 Water location: _____

Number 2

State Waterbody ID:

Year Last Reported:

Waterbody Condition:

Evaluated Use	Condition

Impairment Defined:

 [View Waterbody Report](#)

Existing plans for restoration

303d Listed:

Type of water:

Water location:

Number 3

State Waterbody ID:

Year Last Reported:

Waterbody Condition:

Evaluated Use	Condition

Impairment Defined:

 [View Waterbody Report](#)

Existing plans for restoration

303d Listed:

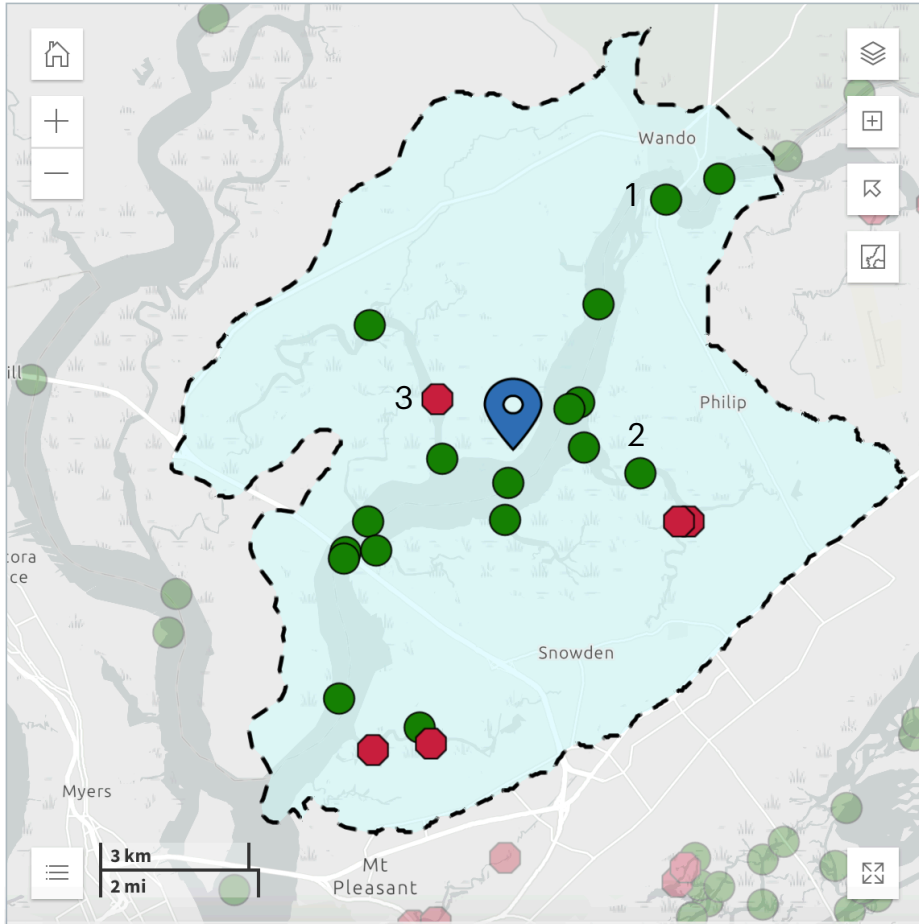
Type of water:

Water location:

29492, Charleston, South Carolina

WATERSHED: Lower Wando River (030502010402)

Using the website mywaterway.epa.gov/community/, identify the following waterways and explain if they are safe or not and why.



Number 1

State Waterbody ID:

Year Last Reported:

Waterbody Condition:

Evaluated Use	Condition

Impairment Defined:

[View Waterbody Report](#)

Existing plans for restoration

303d Listed:

Type of water:

Water location:

<p>How many? Waterbodies</p>	<p>How many? Monitors and Sensors</p>	<p>How many? Permitted Dischargers</p>
----------------------------------	---	--

Number 2

State Waterbody ID:

Year Last Reported:

Waterbody Condition:

Evaluated Use	Condition

Impairment Defined:

 [View Waterbody Report](#)

Existing plans for restoration

303d Listed:

Type of water:

Water location:

Number 3

State Waterbody ID:

Year Last Reported:

Waterbody Condition:

Evaluated Use	Condition

Impairment Defined:

 [View Waterbody Report](#)

Existing plans for restoration

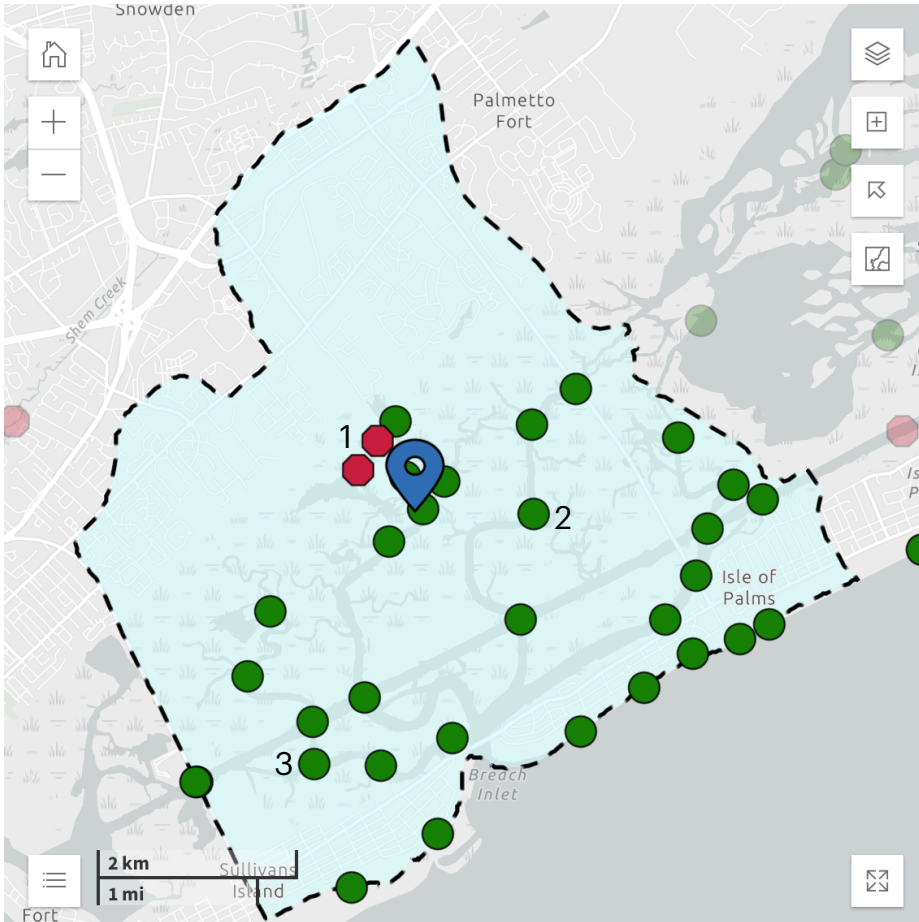
303d Listed:

Type of water:

Water location:

29464, Mount Pleasant, South Carolina
WATERSHED: Breach Inlet (030502090204)

Using the website mywaterway.epa.gov/community/, identify the following waterways and explain if they are safe or not and why.



Number 1
 State Waterbody ID: _____

Year Last Reported: _____

Waterbody Condition: _____

Evaluated Use	Condition

Impairment Defined: _____

[View Waterbody Report](#)

Existing plans for restoration _____

303d Listed: _____

Type of water: _____

Water location: _____

How many? Waterbodies	How many? Monitors and Sensors	How many? Permitted Dischargers
--------------------------	--------------------------------------	---------------------------------------

Number 2

State Waterbody ID:

Year Last Reported:

Waterbody Condition:

Evaluated Use	Condition

Impairment Defined:

 [View Waterbody Report](#)

Existing plans for restoration

303d Listed:

Type of water:

Water location:

Number 3

State Waterbody ID:

Year Last Reported:

Waterbody Condition:

Evaluated Use	Condition

Impairment Defined:

 [View Waterbody Report](#)

Existing plans for restoration

303d Listed:

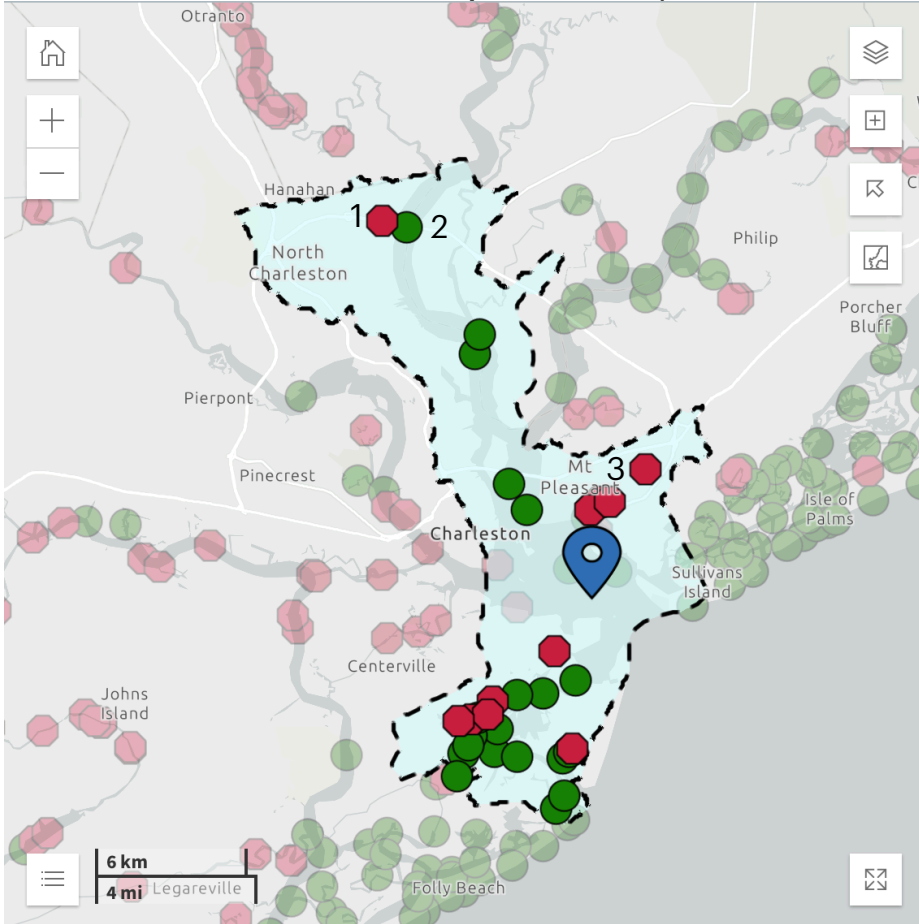
Type of water:

Water location:

Charleston Harbor

WATERSHED: Lower Cooper River (030502010707)

Using the website mywaterway.epa.gov/community/, identify the following waterways and explain if they are safe or not and why.



Number 1

State Waterbody ID:

Year Last Reported:

Waterbody Condition:

Evaluated Use	Condition

Impairment Defined:

[View Waterbody Report](#)

Existing plans for restoration

303d Listed:

Type of water:

Water location:

How many? Waterbodies	How many? Monitors and Sensors	How many? Permitted Dischargers
--------------------------	--------------------------------------	---------------------------------------

Number 2

State Waterbody ID:

Year Last Reported:

Waterbody Condition:

Evaluated Use	Condition

Impairment Defined:

 [View Waterbody Report](#)

Existing plans for restoration

303d Listed:

Type of water:

Water location:

Number 3

State Waterbody ID:

Year Last Reported:

Waterbody Condition:

Evaluated Use	Condition

Impairment Defined:

 [View Waterbody Report](#)

Existing plans for restoration

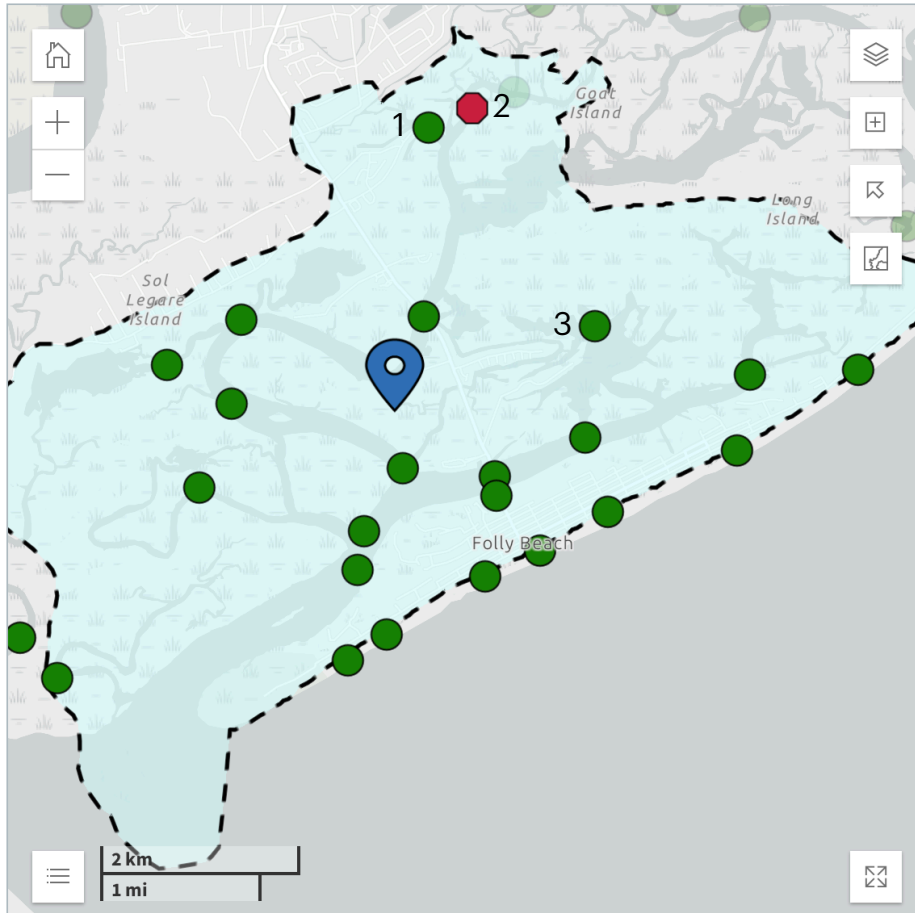
303d Listed:

Type of water:

Water location:

Folly Beach, South Carolina

WATERSHED: Folly Creek (030502020204)



How many? Waterbodies	How many? Monitors and Sensors	How many? Permitted Dischargers
--------------------------	--------------------------------------	---------------------------------------

Using the website mywaterway.epa.gov/community/, identify the following waterways and explain if they are safe or not and why.

Number 1
State Waterbody ID: _____

Year Last Reported: _____

Waterbody Condition:

Evaluated Use	Condition

Impairment Defined: _____

[View Waterbody Report](#)

Existing plans for restoration _____

303d Listed: _____

Type of water: _____

Water location: _____

Number 2

State Waterbody ID:

Year Last Reported:

Waterbody Condition:

Evaluated Use	Condition

Impairment Defined:

 [View Waterbody Report](#)

Existing plans for restoration

303d Listed:

Type of water:

Water location:

Number 3

State Waterbody ID:

Year Last Reported:

Waterbody Condition:

Evaluated Use	Condition

Impairment Defined:

 [View Waterbody Report](#)

Existing plans for restoration

303d Listed:

Type of water:

Water location:
